



TOP 5 TIPS WHEN INTEGRATING DOTNETNUKE WITH SHAREPOINT

Tish Millsap, VP, Marketing

Will Strohl, Sales Engineer

Israel Martinez, Product Manager

CAN YOU HEAR ME?

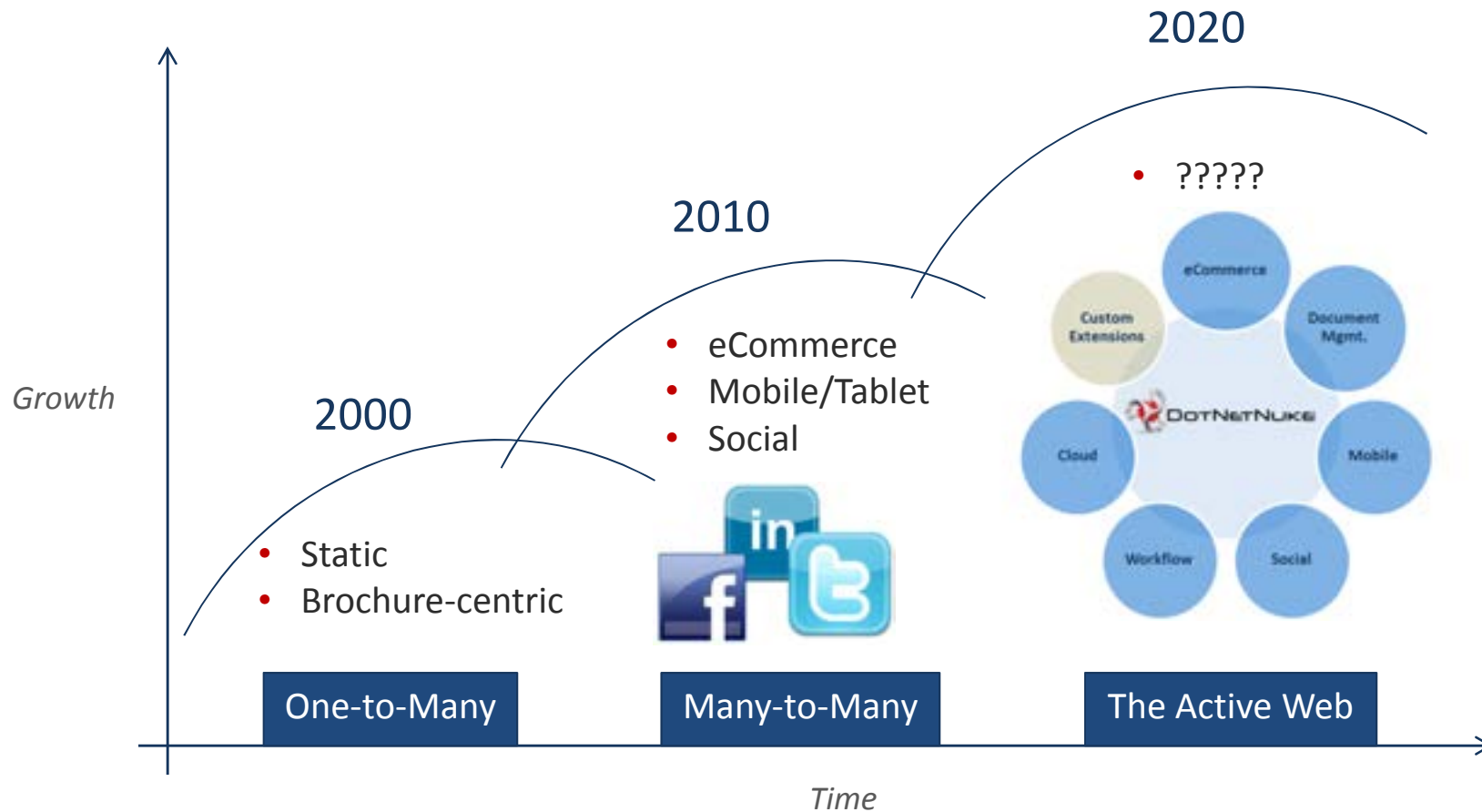
CAN YOU SEE ME?



QUESTIONS

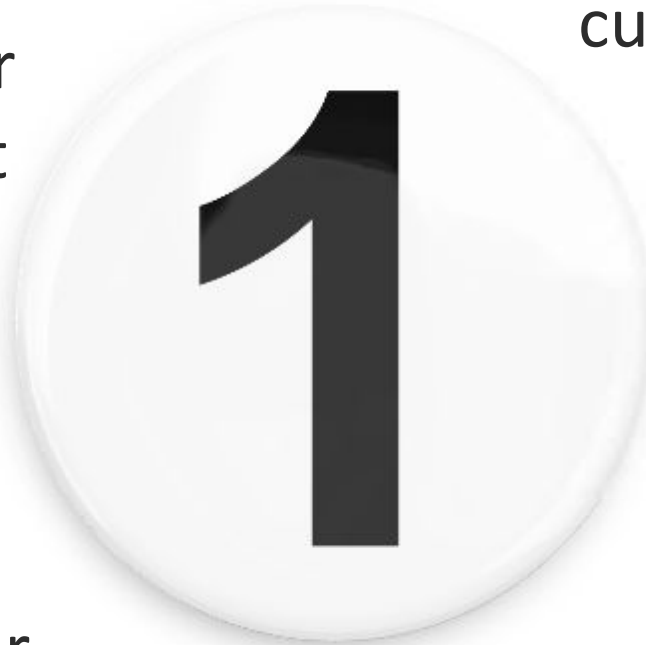


THE PROBLEM WE SOLVE: BUSINESS AGILITY



COMPANY HIGHLIGHTS

World's #1
WCMS for
Microsoft



1,800+
commercial
customers



Largest, most
successful open
source project for
Microsoft
ecosystem

2011 Inc. 500
fastest growing
company



Trophy Case



in Software



in San Francisco

COMPANY HIGHLIGHTS

700,000+
websites



Thousands of
commercial
apps



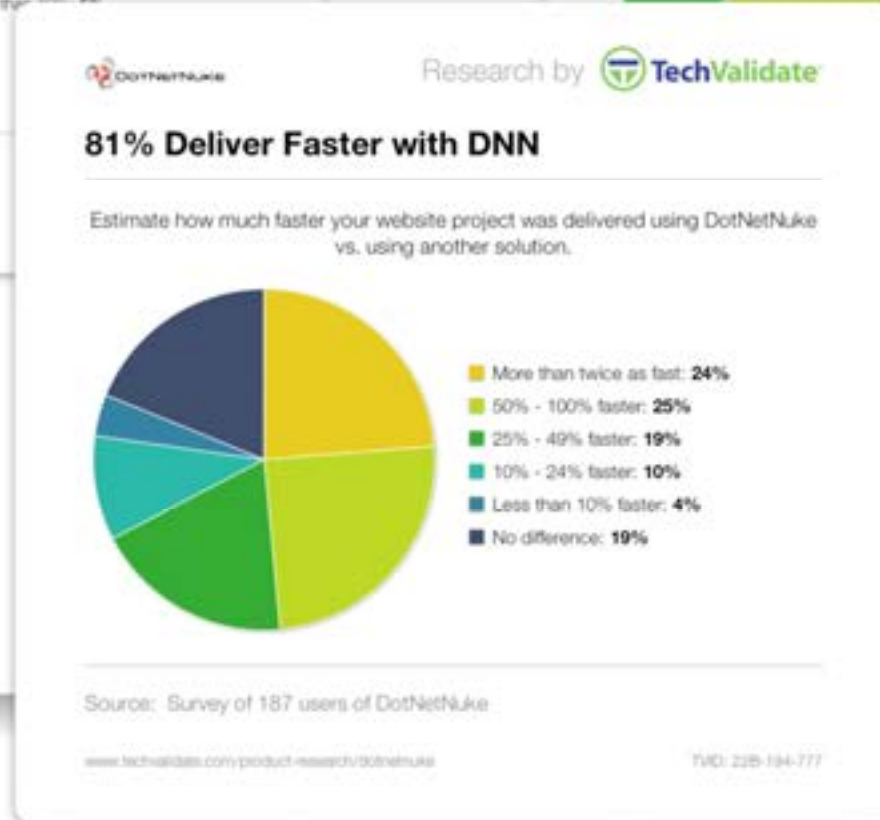
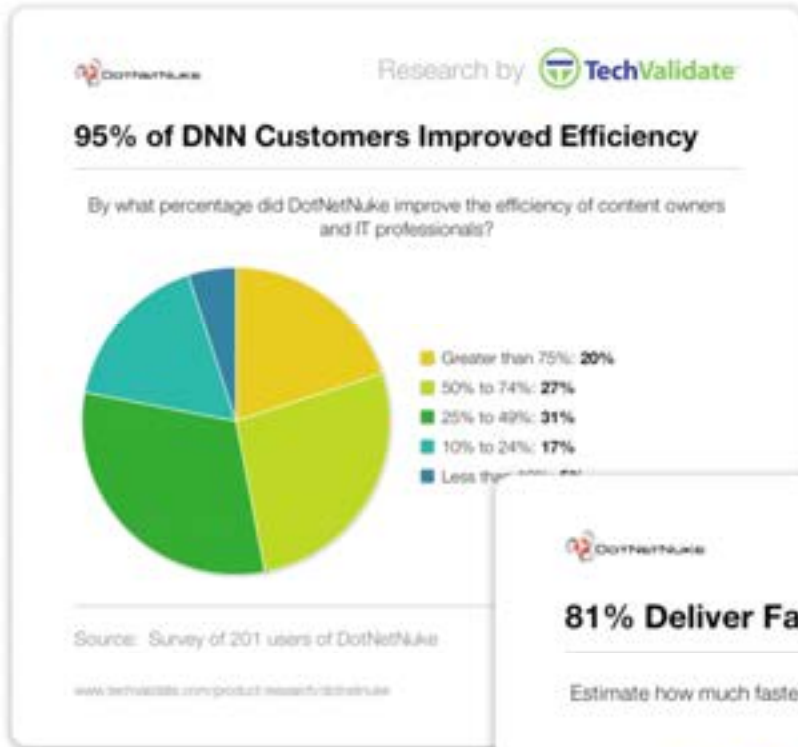
7 million+ downloads



1 million community
members



TechValidate Study of DotNetNuke Customers, April 2012



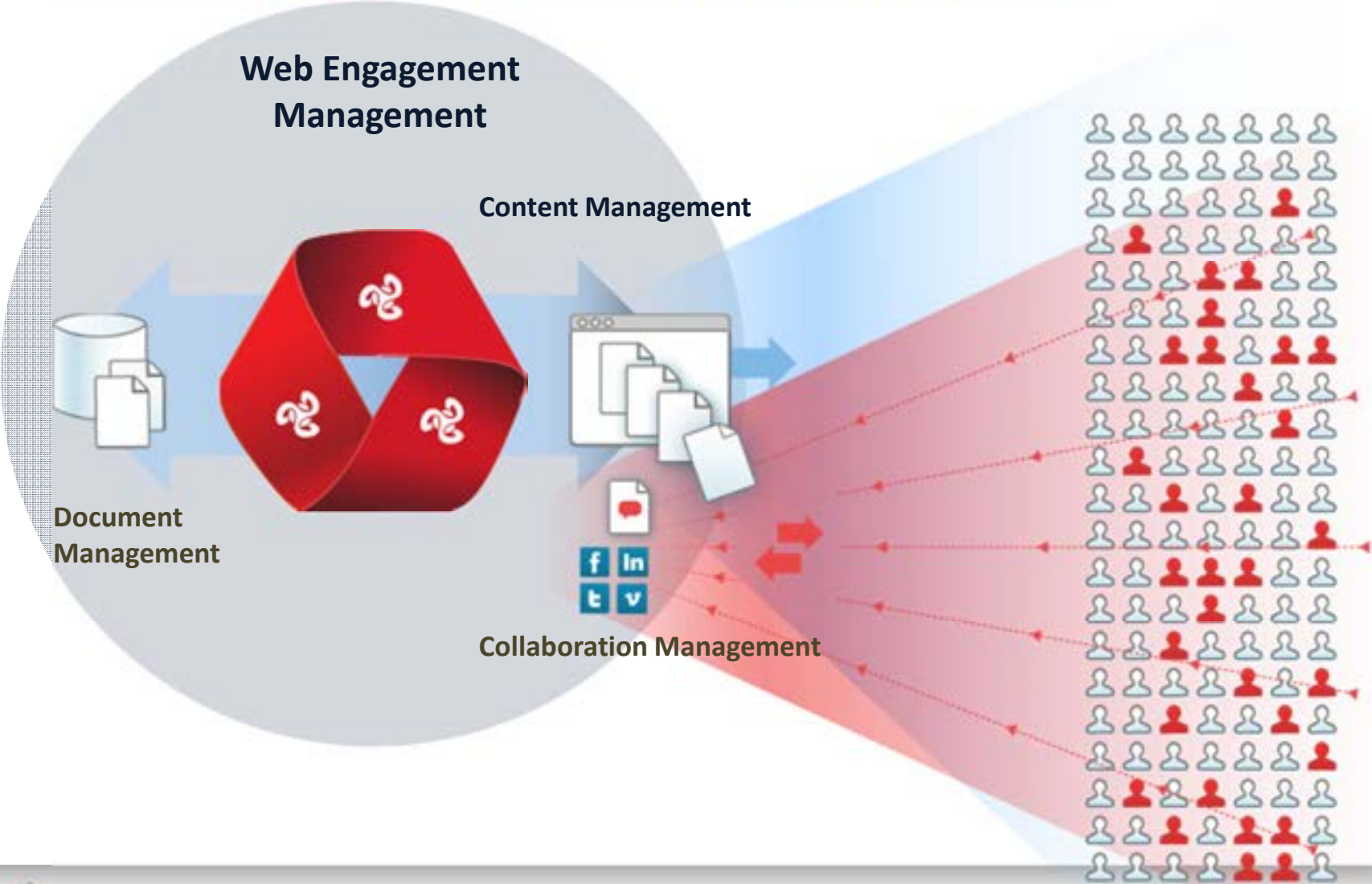
A photograph of a person in a light pink shirt and blue pants pushing a large, dark grey rock up a rocky slope. The background shows a blue sky with clouds and a forested hillside.

Save time and money!

DotNetNuke SharePoint Connector

Automated & Cost Effective
Publishing of Documents
from SharePoint to Your Website

DOTNETNUKE WEB ENGAGEMENT SOLUTIONS

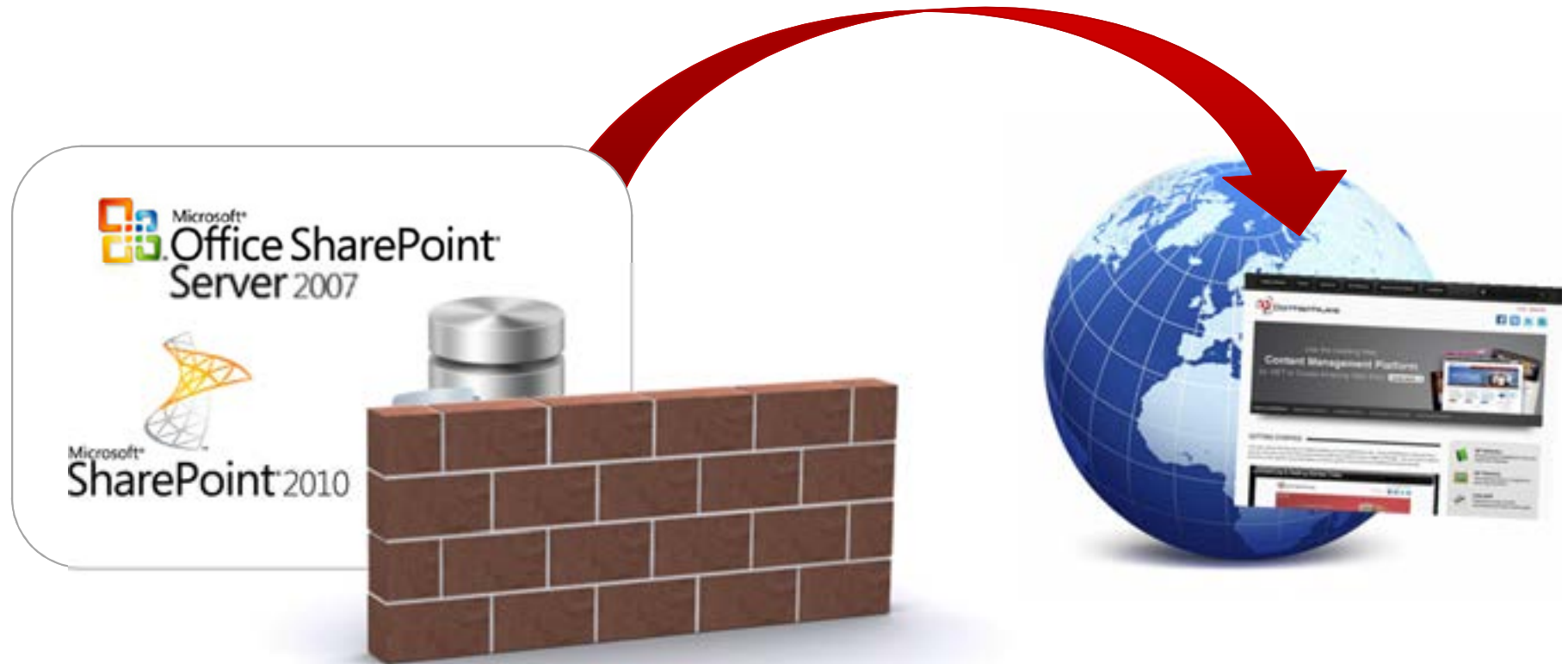




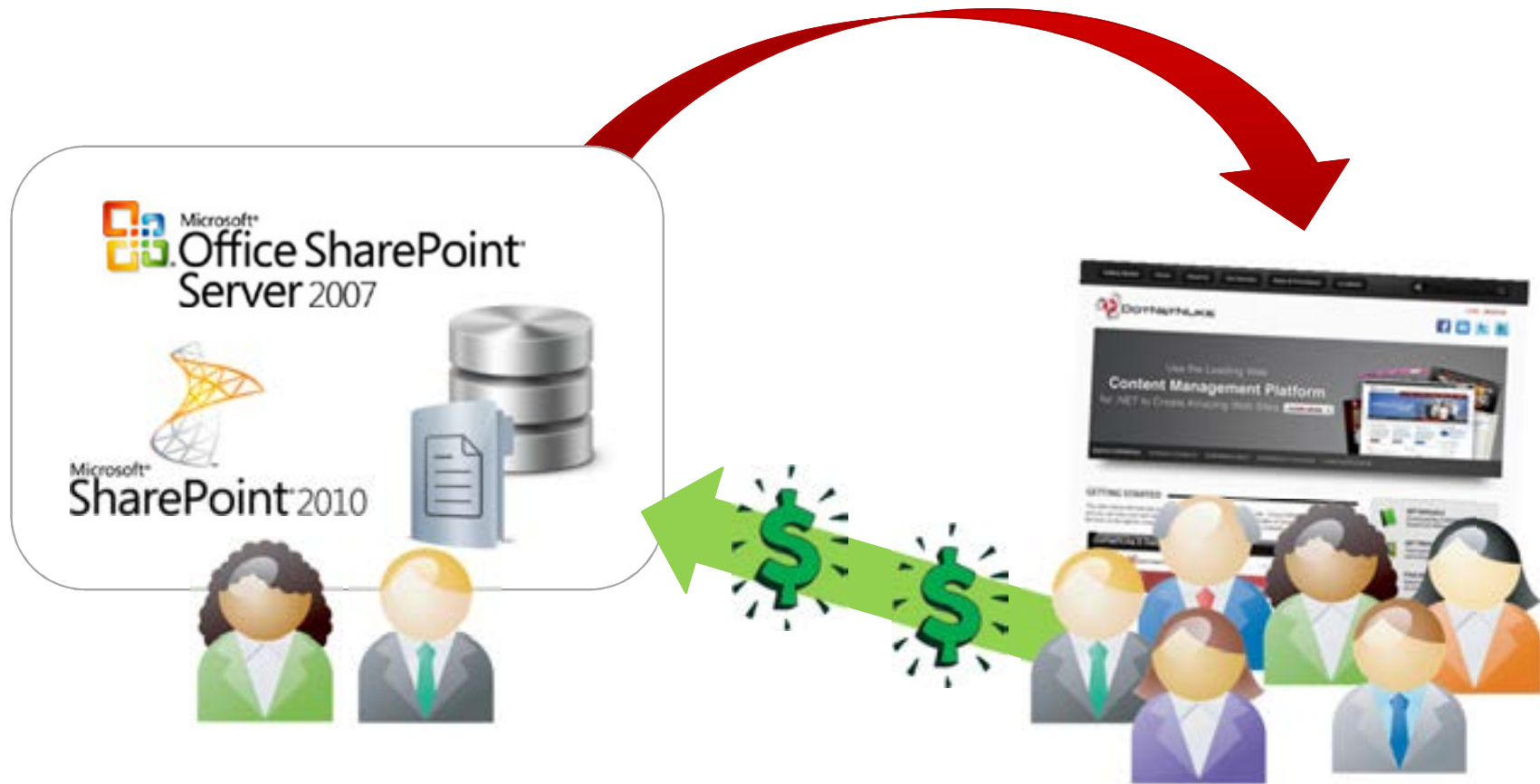
GETTING DOCUMENTS INTO WEBSITES TODAY



WHAT IS THE SHAREPOINT CONNECTOR?



WHAT IS THE SHAREPOINT CONNECTOR?



WHO IS IT FOR?



WHO IS IT FOR?



THE BENEFITS



1. ONLY PUBLISH APPROVED DOCUMENTS

The screenshot shows the 'Add a Workflow' page in a SharePoint environment. The breadcrumb trail is 'Demo > Shared Documents > Document Library Settings > Add a Workflow'. The page title is 'Add a Workflow' and the subtitle is 'Use this page to set up a workflow for this document library.' The left sidebar contains navigation links for 'Home', 'Libraries', 'Site Pages', 'Shared Documents', 'Lists', 'Calendar', 'Tasks', 'Discussions', 'Team Discussion', 'Recycle Bin', and 'All Site Content'. The main content area is divided into several sections: 'Workflow' (instructions on selecting a template), 'Name' (text input for workflow name), 'Task List' (dropdown for task list), 'History List' (dropdown for history list), and 'Start Options' (checkboxes for manual start, permissions, and triggers). A 'Select a workflow template:' dropdown is open, showing options: 'Composition Approval', 'Three-state', 'Collect Feedback - SharePoint 20...', and 'Collect Signatures - SharePoint 20...'. The 'Description' field for the selected template reads: 'Manages document expiration and retention by allowing participants to decide whether to retain or delete expired documents.' The 'Select a task list:' dropdown is set to 'Tasks', with a description: 'Use the Tasks list to keep track of work that you or your team needs to complete.' The 'Select a history list:' dropdown is set to 'Workflow History (new)', with a description: 'A new history list will be created for use by this workflow.' The 'Start Options' section includes:

- Allow this workflow to be manually started by an authenticated user with Edit Item permissions. Require Manage Lists Permissions to start the workflow.
- Start this workflow to approve publishing a major version of an item.
- Start this workflow when a new item is created.
- Start this workflow when an item is changed.

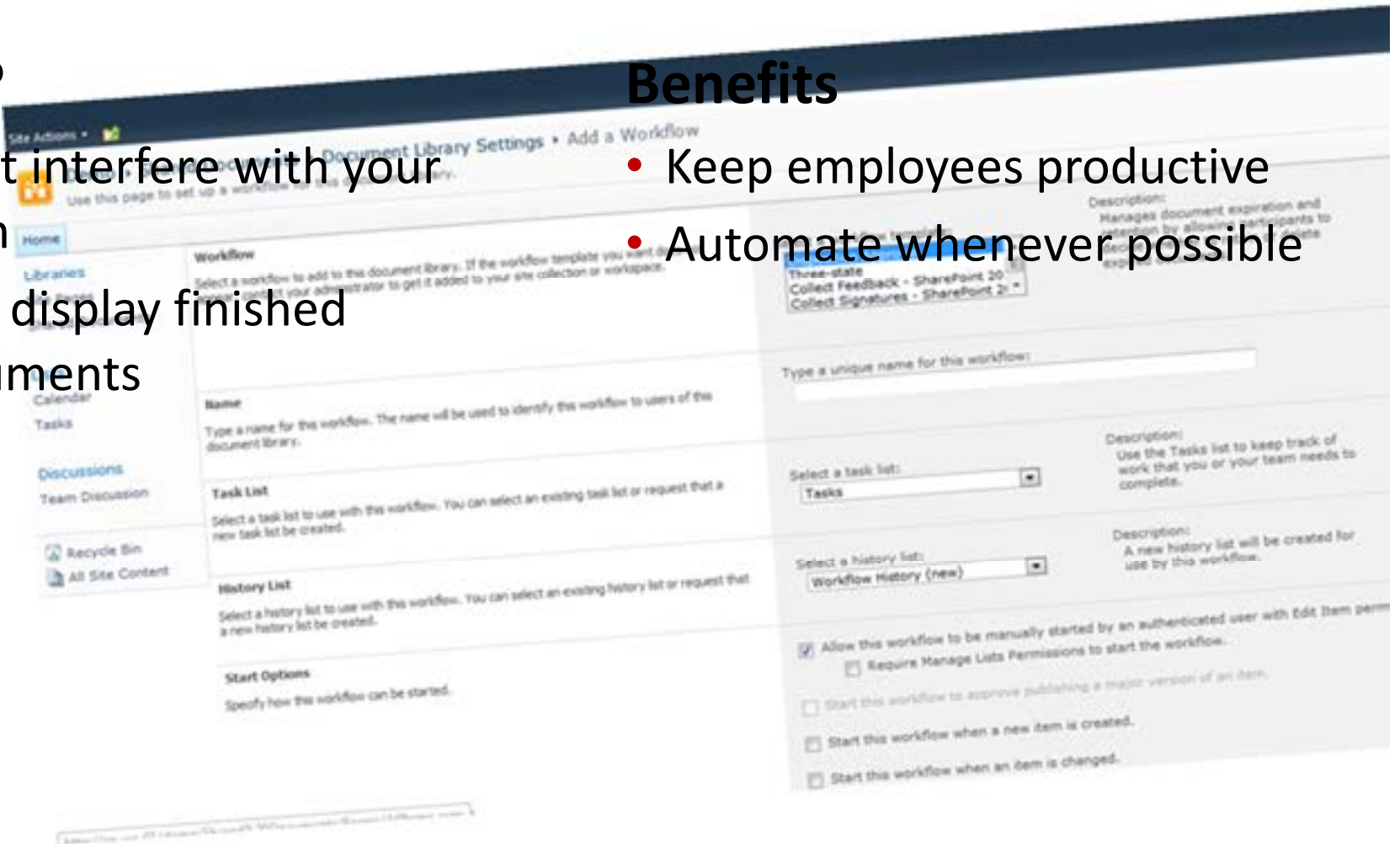
1. ONLY PUBLISH APPROVED DOCUMENTS

Why?

- Don't interfere with your team
- Only display finished documents

Benefits

- Keep employees productive
- Automate whenever possible



2. KEEP PERMISSIONS CONSISTENT

The screenshot shows the 'Permission Tasks' section in a SharePoint interface. It includes buttons for 'Manage Parent', 'Stop Inheriting Permissions', 'Grant Permissions', 'Create Group', and 'Check Permissions'. Below these is a yellow banner stating 'This Web site inherits permissions from its parent, (Home)'. A table lists the permissions for the site:

Name	Type	Permission Levels
Home Members	SharePoint Group	Contribute
Home Owners	SharePoint Group	Full Control
Home Visitors	SharePoint Group	Read
Israel Martinez (DNCORP\israel.martinez)	User	Limited Access
Viewers	SharePoint Group	View Only

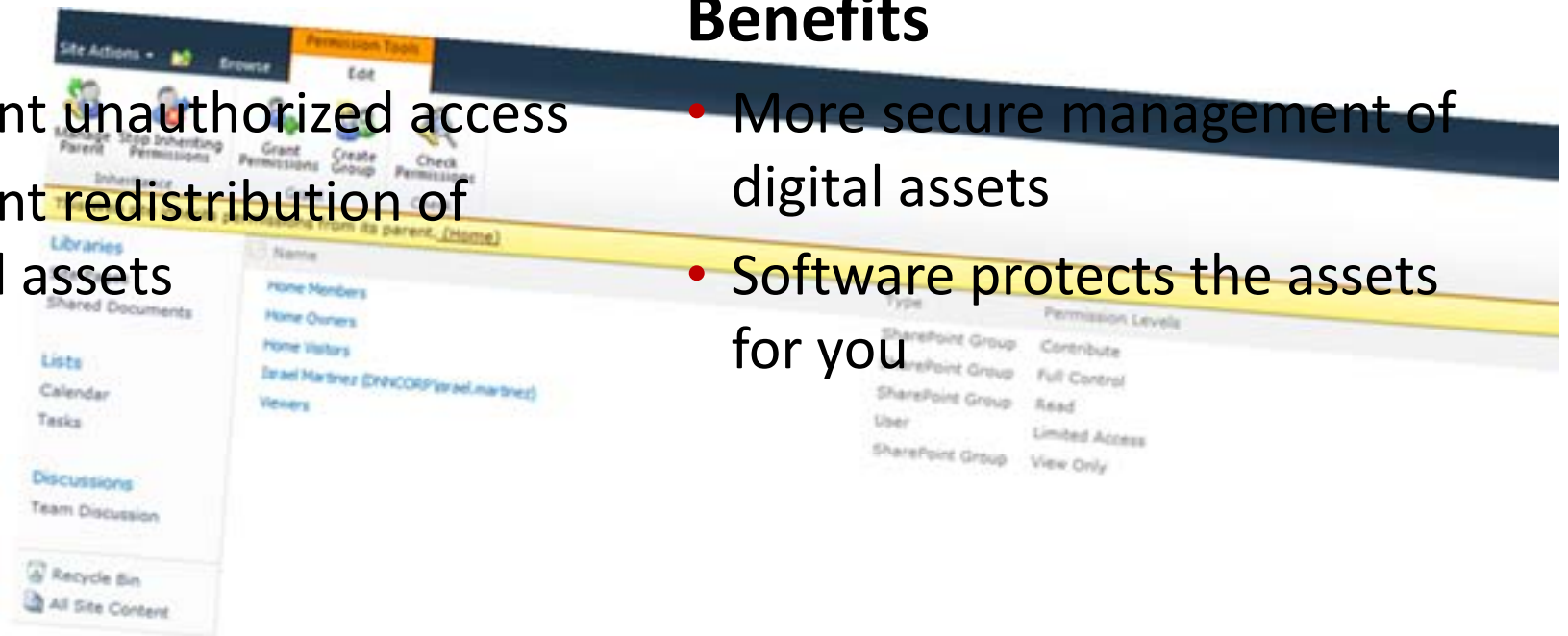
2. KEEP PERMISSIONS CONSISTENT

Why?

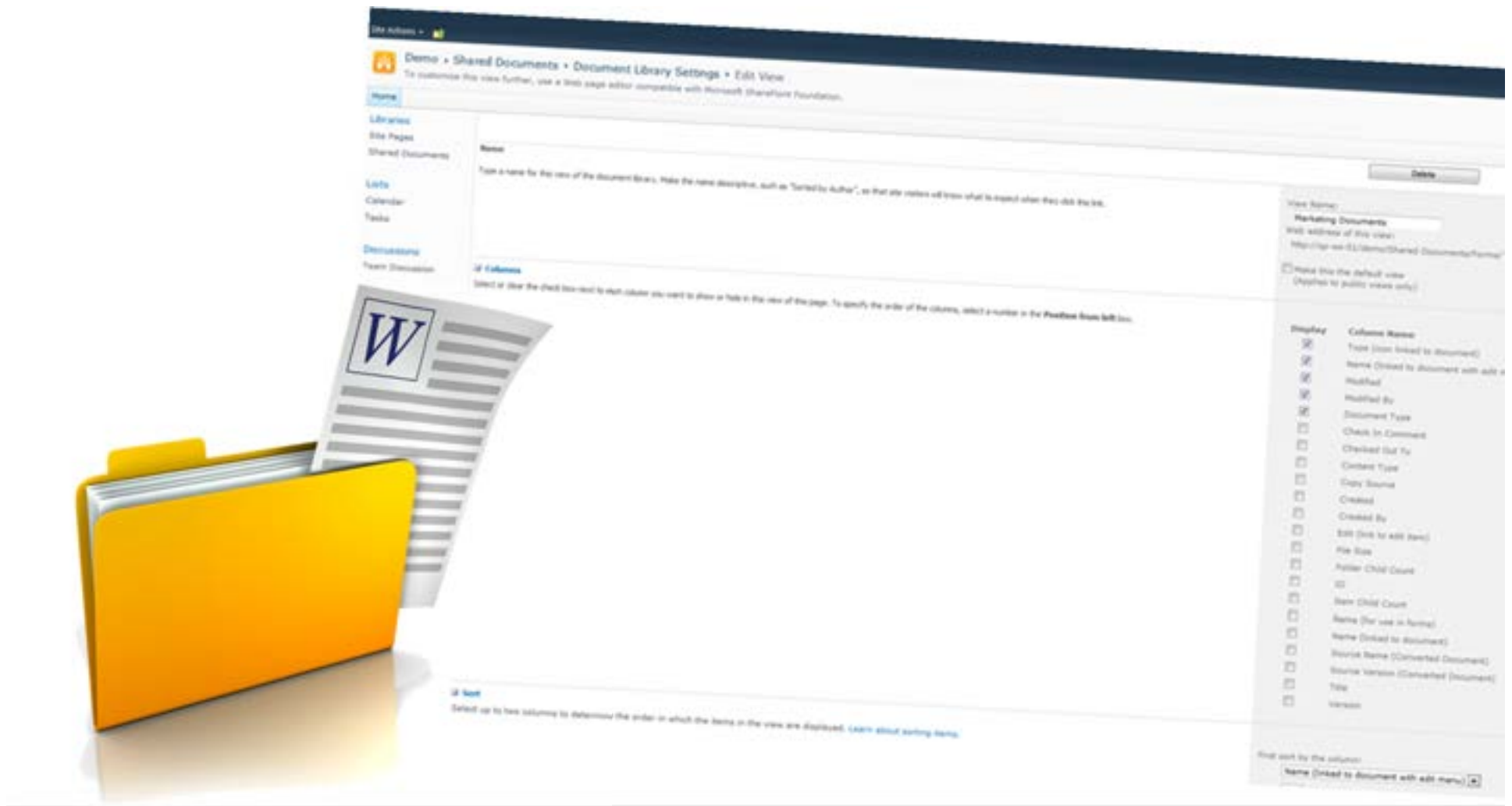
- Prevent unauthorized access
- Prevent redistribution of digital assets

Benefits

- More secure management of digital assets
- Software protects the assets for you



3. VIEWS VS. FOLDERS



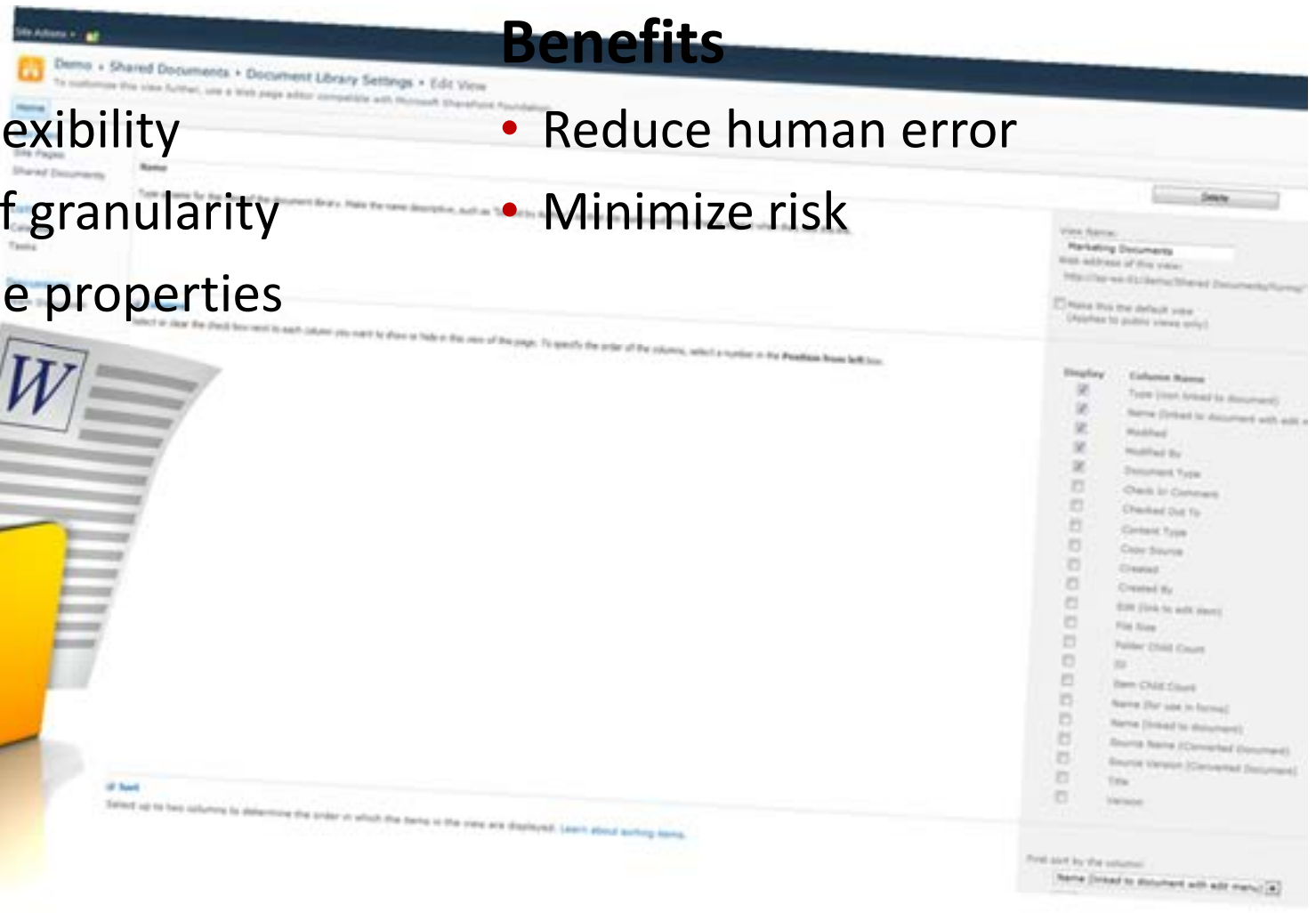
3. USE VIEWS, NOT FOLDERS

Why?

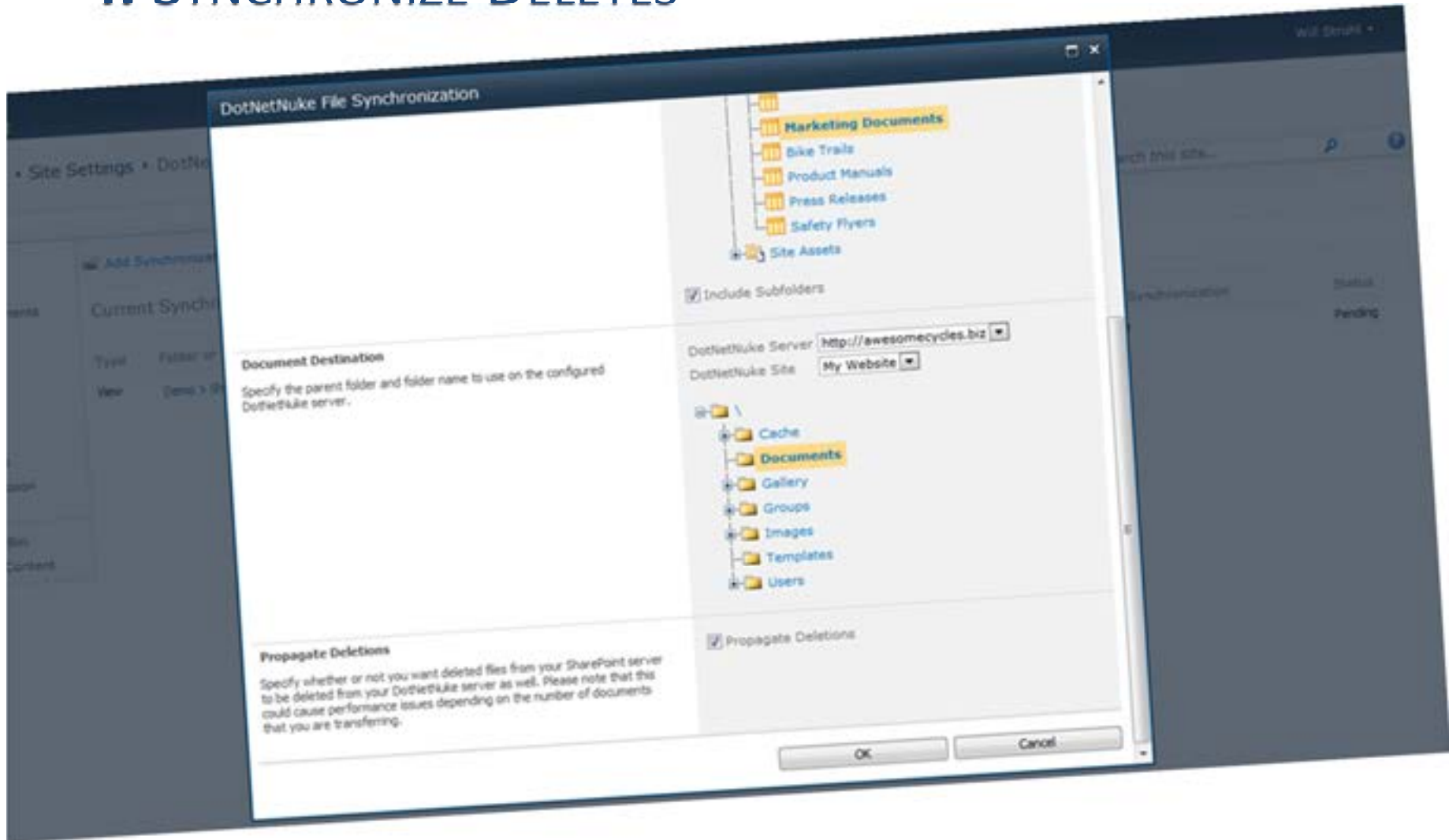
- Unlimited flexibility
- High level of granularity
- Can combine properties

Benefits

- Reduce human error
- Minimize risk



4. SYNCHRONIZE DELETES



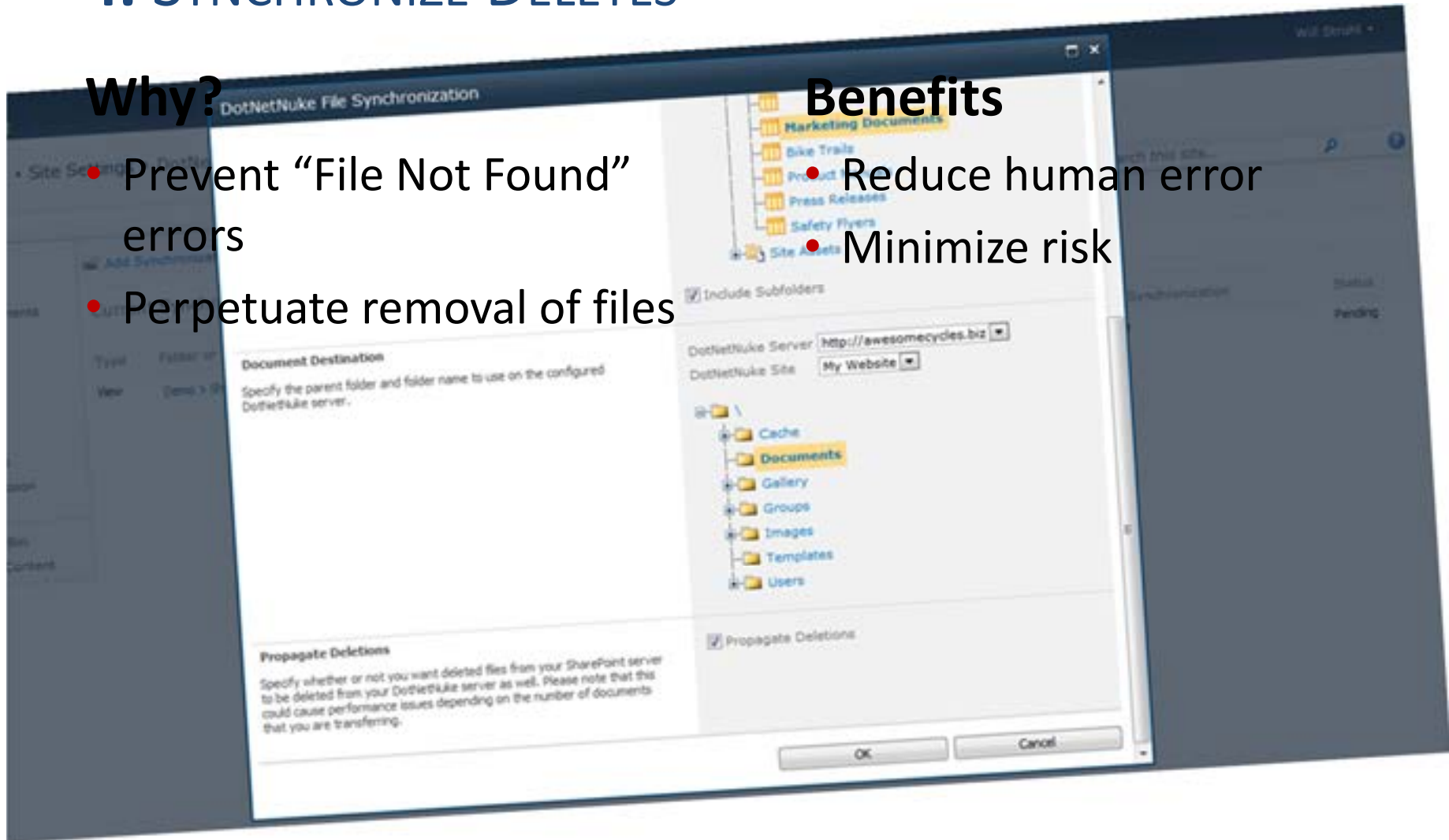
4. SYNCHRONIZE DELETES

Why?

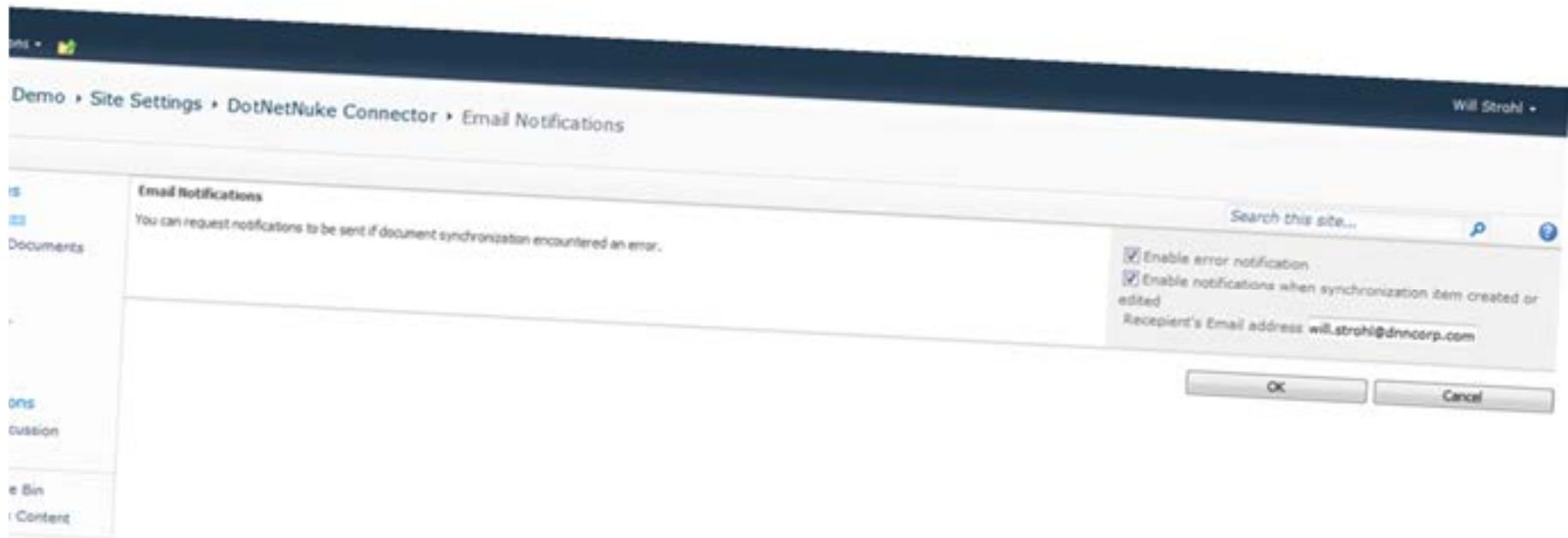
- Prevent “File Not Found” errors
- Perpetuate removal of files

Benefits

- Reduce human error
- Minimize risk



5. ENABLE ERROR NOTIFICATIONS



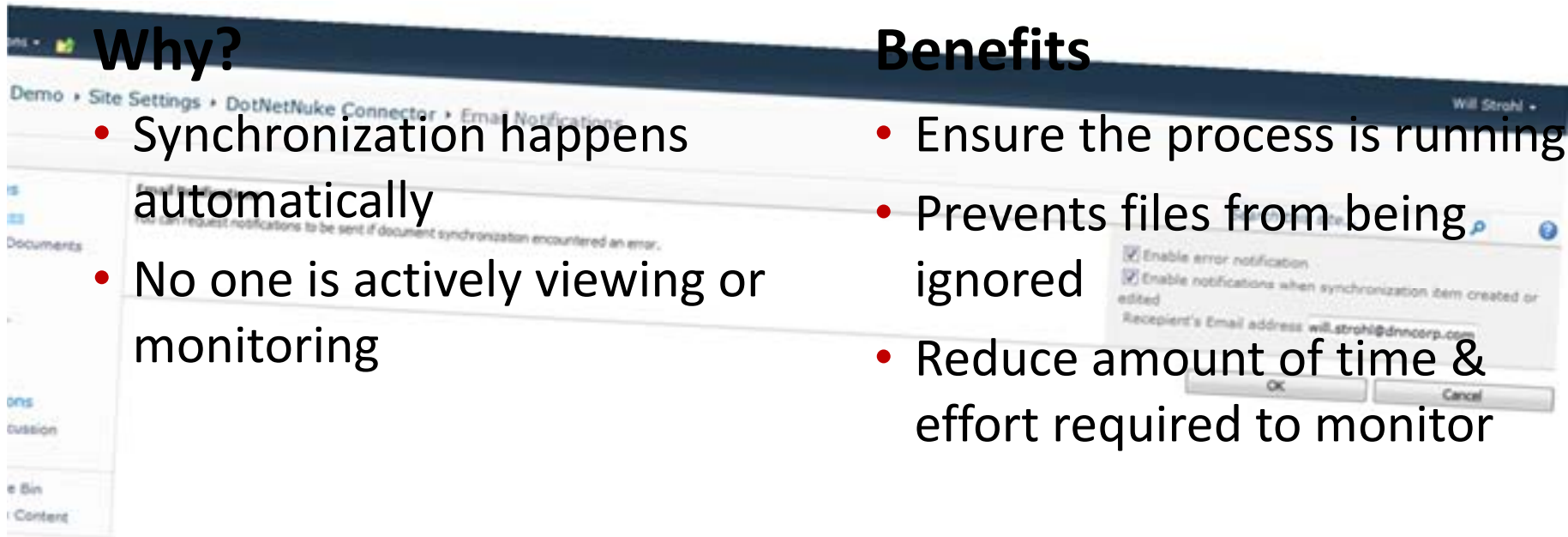
5. ENABLE ERROR NOTIFICATIONS

Why?

- Synchronization happens automatically
- No one is actively viewing or monitoring

Benefits

- Ensure the process is running
- Prevents files from being ignored
- Reduce amount of time & effort required to monitor



Bonus!

6. CLEARLY DEFINE SUCCESS METRICS

*Know what goals you
want to accomplish!*



6. CLEARLY DEFINE SUCCESS METRICS

Measure:

- Time saved
- Number of errors
- Number of files missing
- Time to publish

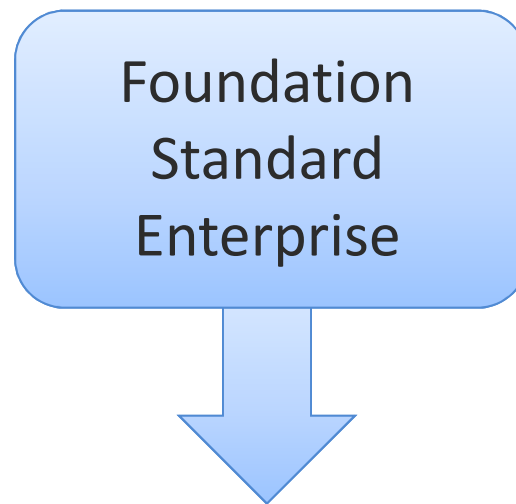
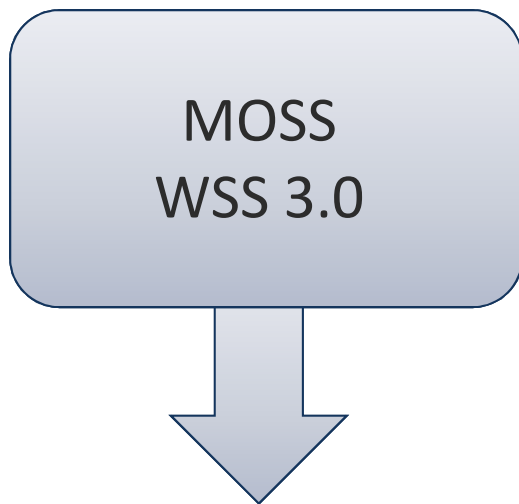


SHAREPOINT CONNECTOR BENEFITS

- Minimize impact to existing business functions
- Automatically have documents available
- Increase productivity of employees
- Leverage existing processes
- Protect your digital assets
- Prevent human error
- Minimize risk



SUPPORTED VERSIONS OF SHAREPOINT



DOTNETNUKE EDITIONS

Community Edition

Free, Open Source solution

Deployed in hundreds of thousands of production websites

Technical support online via the DotNetNuke Forums

Professional Edition

Paid, commercial solution

For large & business-critical websites

Granular permissions, commerce, workflow, mobile, etc.

Online support from DotNetNuke Corp.

Enterprise Edition

Paid, commercial solution

For large & business-critical websites

Online support from DotNetNuke Corp.

**Content Staging
SharePoint Connector**

DOTNETNUKE SERVICES

Elite Support

Telephone-based

Quicker Response Time

Installation/Upgrade Support

Developer Support

Direct Access to Engineers

Questions & Direction

Available in 10-hour time blocks

Training

Webinars

On-Site Training

Custom Training



Chris Hammond
Author, Director of Training Programs

QUESTIONS & ANSWERS

Purchase Enterprise Edition

- Phone: (650) 288-3150
- E-Mail: sales@dnncorp.com

More Webinars

- <http://bit.ly/DNNWebinar>

DNN World 2012

- <http://bit.ly/dnnworld>

DNN World Presenter Interviews

- Every Wednesday at 10:15 AM PDT
- <http://bit.ly/dnnplus>

Lee Wise 10 Pound Gorilla

